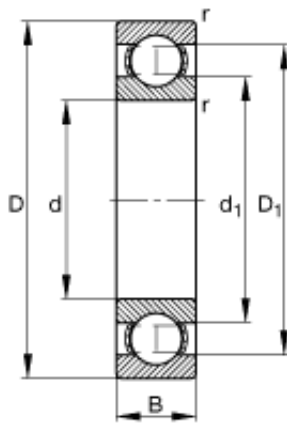




# WJE Bearing Manufacturing Co., Ltd.



## 15 mm x 35 mm x 11 mm FAG S6202 Single Row Ball Bearings

Bearing No. S6202

S6202 Bearing 2D drawings and 3D CAD models

Size	15x35x11 mm
Bore Diameter	15 mm
Outer Diameter	35 mm
Width	11 mm
d	15 mm
D	35 mm
B	11 mm
$D_1$	29,3 mm
$D_{a \max}$	30,8 mm
$d_1$	21,1 mm
$d_{a \min}$	19,2 mm
$r_{a \max}$	0,6 mm
$r_{\min}$	0,6 mm
m	0,043 kg / Weight
$C_r$	6490 N / Dynamic load rating (radial)
$C_{0r}$	3000 N / Static load rating (radial)
$n_G$	30000 1/min / Limiting speed
$n_B$	20200 1/min / Reference speed
$C_{ur}$	220 N / Fatigue limit load, radial